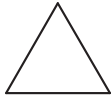


ECOPHON SOLO™ TRIANGLE

Solo Triangle is a free-hanging unit, offering high level design possibilities. Three different suspension systems offer opportunities to create several layers and angles. Suitable when the room volume should be maintained or when it's not possible to install a wall-to-wall ceiling.

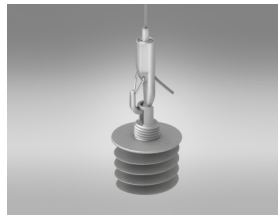
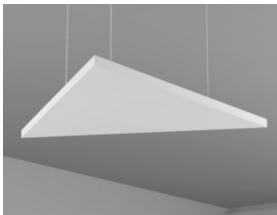


Ecophon Solo™ Triangle



SYSTEM RANGE

| Size, mm | 1039x1200 |
|----------------|-----------|
| Special Fixing | • |
| Thickness | 40 |
| Inst. Diag. | M297 |



Suspension with Connect Adjustable wire hanger and Connect Absorber anchor

TYPE OF APPLICATION

- Healthcare
- Office



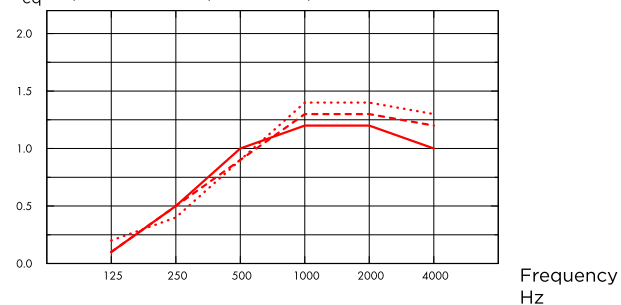
ACOUSTIC

The values in the diagram refer to a single unit. If the units are arranged in a cluster with distances between units less than 0,5 meters, the Aeq per unit will be slightly reduced.

Sound Absorption

Based on test results according to EN ISO 354.

A_{eq}, Equivalent absorption area per unit (m² sabin)



- Solo Triangle 1039x1200, 200 mm o.d.s.
 - - - Solo Triangle 1039x1200, 400 mm o.d.s.
 - ... Solo Triangle 1039x1200, 1000 mm o.d.s.
- o.d.s = overall depth of system

| THK mm | o.d.s. mm | A _{eq} , Equivalent absorption area per unit (m ² sabin) | | | | | |
|--------|-----------|--|--------|--------|---------|---------|---------|
| | | 125 Hz | 250 Hz | 500 Hz | 1000 Hz | 2000 Hz | 4000 Hz |
| 40 | 200 | 0.1 | 0.5 | 1.0 | 1.2 | 1.2 | 1.0 |
| 40 | 400 | 0.1 | 0.5 | 0.9 | 1.3 | 1.3 | 1.2 |
| 40 | 1000 | 0.2 | 0.4 | 0.9 | 1.4 | 1.4 | 1.3 |



INDOOR AIR QUALITY

| Certificate / Label | |
|------------------------------|----------|
| Eurofins Indoor Air Comfort® | IAC Gold |
| French VOC | A+ |



CRADLE TO CRADLE CERTIFIED®

This product is Cradle to Cradle Certified® at Bronze level (version 4.0).



MATERIAL HEALTH

This product has received a C2C Certified Material Health Certificate™ at the Silver level (standard version 4.0). The C2C Certified Material Health Certificate™ is a verification of the health and safety of a product's composition using the Material Health requirements of the Cradle-to-Cradle Certified Product Standard.



CARBON FOOTPRINT

Life-cycle stages A1 to C4 from EPD, in conformity with ISO 14025 / EN 15804

| | kg CO ₂ equiv/m ² |
|--------------|--|
| Solo Freedom | 8,41 (Solo Family EPD in conformity with ISO 14025 / EN 15804) |



CIRCULARITY

| | |
|--|------------------|
| Minimum post-consumer recycled content | 57% |
| Recyclability | Fully recyclable |



FIRE SAFETY

The glass wool core of the tiles is tested and classified as non-combustible according to EN ISO 1182.

| Country | Fire standard | Class |
|---------|---------------|----------|
| Europe | EN 13501-1 | A2-s1,d0 |



HUMIDITY RESISTANCE

Class C, relative humidity 95% and 30°C, according to EN 13964:2014



VISUAL APPEARANCE

White Frost, nearest NCS colour sample S 0500-N, 85% light reflectance. Gloss < 1.



CLEANABILITY

Daily dusting and vacuum cleaning. Weekly wet wiping.



ACCESSIBILITY

The tiles are demountable.



INSTALLATION

Installed according to installation diagrams, installation guides and drawing aid. For information regarding minimum overall depth of system see quantity specification.



PACKAGING INFORMATION

Information is indicative and subject to change.

| | Panels / crt |
|--------------|--------------|
| 1039x1200x40 | 4 |



SYSTEM WEIGHT

Weight information is indicative and subject to variation.

| | kg/m ² |
|---------------|-------------------|
| Solo Triangle | 4,7 |



MECHANICAL PROPERTIES

The tile can take both point loads and distributed loads. See Functional demands, Mechanical properties at www.ecophon.com.



CE

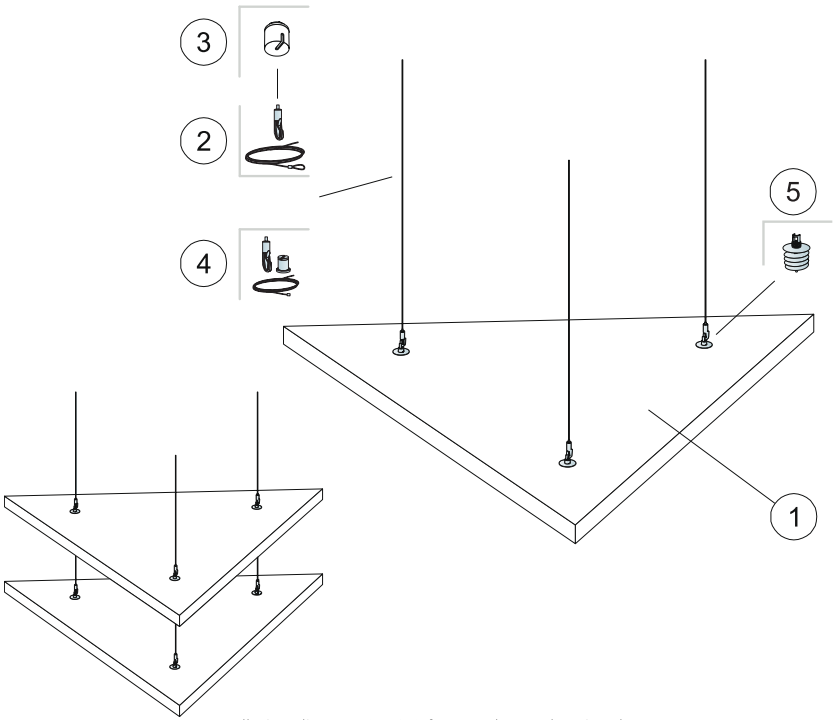
Ecophon ceiling systems are CE marked according to the European harmonized standard EN13964:2014. CE marked construction products are covered by a Declaration of Performance (DOP) which enables customers and users to easily compare performance of products available on the European market.

COLOURS AND DESIGN

Akutex™ FT

| | | | | | | |
|-----------------|--------------------|------------------|------------------|---------------------|---------------------|------------------|
| White Frost | Moonlight sky | Highland fog | Sunset heat | Ocean storm | Morning drizzle | Peach rose |
| Goji berry | Scallop shells | Fresh clover | Sage garden | Eucalyptus leaf | Summer forest | Golden field |
| Ruby rock | Wet sand | Silent steam | Dark diamond | Cloudy day | Volcanic ash | Silver stone |
| Silk slate | | | | | | |

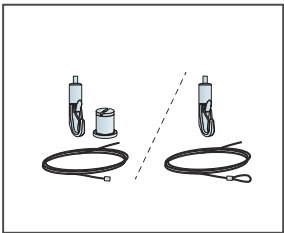
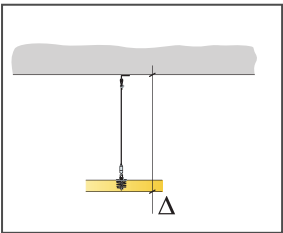
Wire



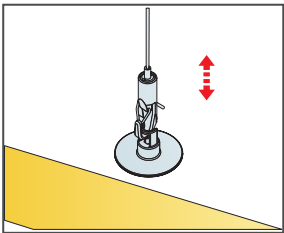
Installation diagram (M297) for Ecophon Solo Triangle

Quantity specification (excl. wastage)

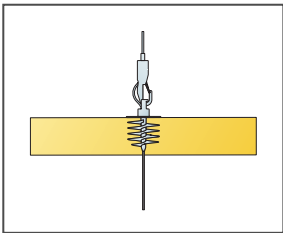
| | | Size, mm |
|--|---|---------------------------|
| | | 1039x1200 |
| 1 | Solo Triangle | 0,62m ² /panel |
| 2 | Connect Adjustable wire hanger (Alt 1) | 3/panel |
| 3 | Connect Covering cup (Alt 1, Optional) | 3/panel |
| 4 | Connect Adjustable wire Kit (Alt 1, Optional) | 3/panel |
| 5 | Connect Absorber anchor | 3/panel |
| Δ Min. overall depth of system: 140 mm | | |
| To install Connect Absorber Anchor, use Connect Absorber Anchor Bit. | | |



Two types of Adjustable wire solutions



Easily adjustable suspension with Connect Adjustable wire hanger



Panels can be suspended underneath each other